

Our products / Protection against direct effects of lightning

> Brackets and fixings >

■ Waterproofing

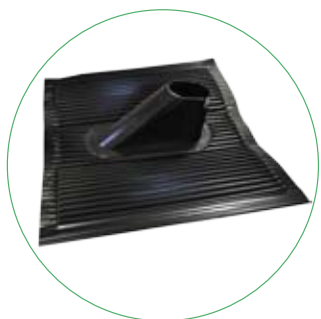
Waterproofing when the Air terminal pole is fixed through a roof.

[The tile must be installed with the cone, delivered with a cone. (réf. 12114)

[Cone can be delivered independently (Ref 80087)

• 12114/80087

Ref. 12114/80087



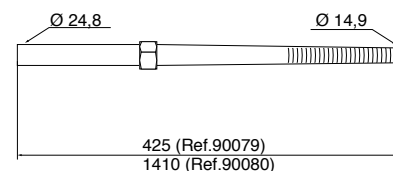
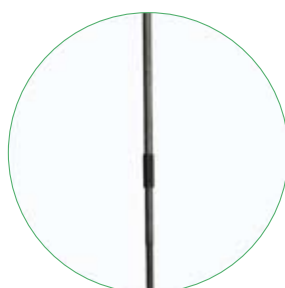
Ref	Designation	Material	Dimensions	Weight
12114	Waterproof tile	Polyethylene	550 x 500 x 190 mm	0,56 kg
80087	Waterproof cone	Polyethylene	120 x 120 x 70 mm	0,03 kg

■ Anchor bolt

These anchor bolts are used to fix Air Terminals directly on wood frames.

• 90079/90080

Ref. 90079/90080



Ref	Material	Length	Upper diameter	Weight
90079	Bichromated steel	0,425 m	24,8 mm	1,5 kg
90080	Bichromated steel	1,41 m	24,8 mm	5,5 kg